

Walk-in cold rooms

Europa



*Modular
Can be partitioned
Can be coupled
Open-ended*



Europa

«Proven quality»

Europa cold rooms can be partitioned or coupled in different thicknesses and heights in order to realize either very simple or very complex configurations. They are expandible. They are dedicated for all commercial or industrial applications.

As each project is specific, we propose a full range of doors : hinged or sliding insulated doors, service doors swinging doors. As doors are subject to hard request, they are designed for long term use, stringent working atmosphere and strong cleaning conditions.



Size characteristics

	Thickness 60 mm	Thickness 100 mm	Thickness 150 mm
Current use	Positive temperatures	Negative temperatures until -25°C	Negative temperatures until -40°C (frozen products)
Inside height	201,5 cm - 221,5 cm - 241,5 cm for rooms with module 20 cm 201,5 cm - 221,5 cm - 241,5 cm - 281,5 cm - 321,5 cm... for rooms with module 40 cm		
Inside dimensions Length x width	from 80 x 80 cm to 600 x 960 cm... (module 20 cm up to 400 cm, module 40 cm thereafter)		from 80 x 80 cm to 600 x 960 cm... (module 40 cm)
Outside height WITHOUT floor out of omega 20 cm high	Inside height + 6 cm	Inside height + 10 cm	
Outside height WITH floor out of omega 20 cm high	Inside height + 12 cm (excluding floor bearers)	Inside height + 26 cm (including floor bearers ht 6 cm)	Inside height + 36 cm (including floor bearers ht 6 cm)
Outside dimensions Length x width	Inside dimensions + 12 cm	Inside dimensions + 20 cm	Inside dimensions + 30 cm

Technical characteristics

Partitions and ceiling consist in panels with camelocks of thickness 60, 100 or 150 mm, with iceberg white (close RAL 9010) powder-coated smooth steel facings and high density polyurethane foam core, HCFC-free. Other coatings in option (stainless steel, PVC, PET, grey lacquered steel (close RAL 9006)).

- Fire reaction class : C,s3-d0 in basis - option B,s3-d0 (M1)
- Thermal conductivity $\lambda = 0,023 \text{ W/m}^\circ\text{C}$
- Density 40 kg/m^3
- Uc value : $0,37 \text{ W/m}^2 \cdot ^\circ\text{C}$ in thk. 60 mm
Uc value : $0,22 \text{ W/m}^2 \cdot ^\circ\text{C}$ in thk. 100 mm
Uc value : $0,15 \text{ W/m}^2 \cdot ^\circ\text{C}$ in thk. 150 mm

Floor consist in panels with camelocks, thickness 60, 100 or 150 mm with high density polyurethane foam core HCFC-free, lower facing in lacquered steel and upper facing :

- Standard : plywood 9 mm + phenolic resin with anti-skid hexagonal shape. **(No rolling load)**.
- Option :
 - PVC-coated floor : grey PVC-coated sheet 6/10th bonded on plywood 10 mm
 - Non slipping aluminium reinforced plate (thk. 2 or 4 mm) on standard floor (for negative temperature only)
 - Stainless steel reinforced floor : embossed stainless steel 6/10th glued to CTBX plywood reinforced with steel plate.

Floor panels	Udl load	Concentrated static load	Dynamic load on carriage with 4 ribber coated wheels
Standard floor	3 000 kg/m ²	400 kg/60 cm ²	No rolling load
PVC-coated floor	3 000 kg/m ²	400 kg/60 cm ²	Small trolleys like Rolls
2 mm aluminium reinforced plate	4 000 kg/m ²	800 kg/60 cm ²	800 kg
4 mm aluminium reinforced plate	4 000 kg/m ²	1000 kg/60 cm ²	1000 kg
Stainless steel reinforced floor	4 000 kg/m ²	500 kg/60 cm ²	800 kg

Facings are ability to food contacts.

Junctions : 2 or 3 directions angles

Panel



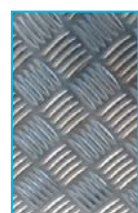
Floors



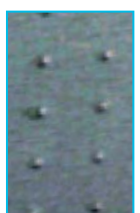
Phenolic resin



PVC-coated floor



Aluminium plate



Stainless steel

Doors types



Insulated hinged door

- Leaf of thickness 60 mm in positive and 100 mm in negative
- Outside panel face in white complex PET non scratching and corrosion resistant / white lacquered sheet on internal face
- Keylock with inside safety opening and striking plate with electrical contact to light the room and stop cooling once opening the door.
- Doorframe with tubes for passage of cables
- Heater tape for negative temperature.



Hinged door

Insulated sliding door

- Leaf of thickness 60 mm in positive and 120 mm in negative
- White smooth lacquered steel facings
- Aluminium rail
- Inside and outside level handle
- Internal PVC protection and external stainless steel rounded protection
- Doorframe with thermal bridge break
- Heater tape for negative temperature



Sliding door

Service door

- Leaf of thickness 40 mm
- White smooth lacquered steel facings
- Wiper gasket
- Inside and outside handles in white PVC



Service door

Swinging door

- Leaf of thickness 40 mm
- White smooth lacquered steel facings
- Anti-finger pinch seal on edge of door
- Vision panel 60 x 30 cm



Swinging door

Option : PET, PVC, Stainless steel or powder-coated steel (colour according to the chart) leaf.



Coupled rooms



Partitioned rooms



Shelvings



Options

- Shelvings 3 levels, maxi. load per level 90 or 120 kg, depth "400" or "500", straight, L or U configuration according to the dimensions of the cell
- Racks
- Ventilation rafters : ht. 6 x 4 cm. Can be placed in direction of height or width.
- Strip curtains
- Finishing accessories : corner profiles, skirtings, handrails
- Pressure relief valves
- Access ramps



Corner profiles



Handrail



Skirting

Recommendations

Optimise cold room operating and reduce energy consumption.

Correct use and regular maintenance will optimise the performance of your cold room. Check regularly the internal temperature and adjust the set point if necessary. Check regularly the status of gaskets and ironmongery and replace them when required.

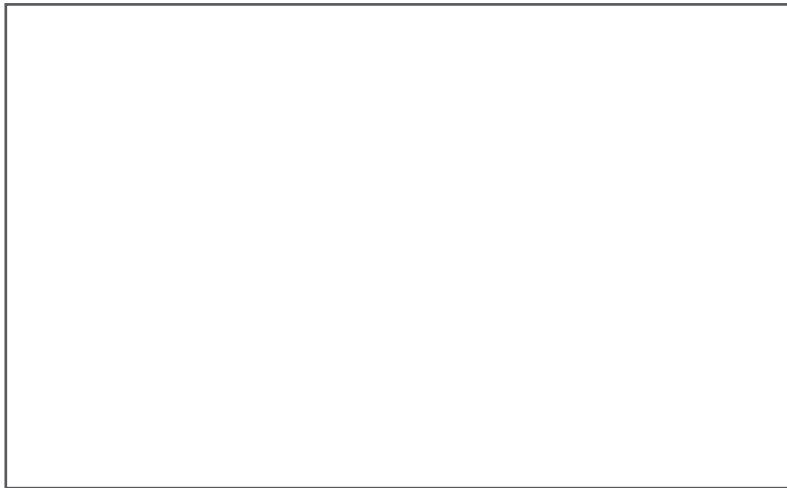
For cleaning, use standard smooth agents, don't let them in contact with claddings for a long time. Use a sponge, at temperature lower than 30°C, then rinse and dry with tex material or rubber scraper.

Don't use abrasive powder, cetonic or chloridic solvent, metallic or hard brushes. In case of persistent stains, use alcohol or light solvent type "C" petrol. Never wash with water in big quantity a negative temperature cold rooms (risks of ice formation).

For negative cold rooms exceeding a volume of 10 m³, warning devices are obligatory.

Dagard, French manufacturer
60 years for insulating
and always quality, disposal, deadline....

Documentation offered by your distributor



See the other lines of cold rooms and refrigeration cells

Taïga Toundra Easy Bloc



route du stade - 23600 Boussac - France
tel. +33 (0) 555 824 000 - fax +33 (0) 555 658 010 - fax export +33 (0) 555 651 854
info@dagard.com - www.dagard.com